



Davey Place | Rugeley | WS15 1NA

Offers Over £180,000



Summary

** POPULAR LOCATION ** IDEAL FOR FIRST TIME BUYERS ** CORNER PLOT ** THREE BEDROOMS ** LIVING ROOM ** LARGE KITCHEN ** BATHROOM ** LARGE REAR GARDEN ** CLOSE TO AMENITIES ** VIEWING ADVISED **

WEBBS ESTATE AGENTS are pleased to market this well presented three bedroom semi detached family home, situated on a large corner plot, in a popular area of Rugeley on Davey Place, Pear Tree. The property would be ideally suited to a first time buyer looking to get their foot on the property ladder. Viewing of the property is highly advised to appreciate the deceptive accommodation on offer. Located close to amenities, useful transport links, schools and a short distance to Cannock Chase.

The internal accommodation briefly comprises; entrance hallway, living dining room, kitchen, three bedrooms and a family bathroom. The property also benefits from a large rear garden.

Key Features

- POPULAR LOCATION
- CORNER PLOT
- LIVING ROOM
- BATHROOM
- CLOSE TO AMENITIES
- IDEAL FOR FIRST TIME BUYERS
- THREE BEDROOMS
- LARGE KITCHEN
- LARGE REAR GARDEN
- VIEWING ADVISED

Rooms and Dimensions

Entrance Hallway

Lounge

19'7" x 9'10" (5.97 x 3.01)

Kitchen

19'10" x 9'5" (6.06 x 2.89)

Landing

Bedroom One

10'2" x 9'10" (3.12 x 3.00)

Bedroom Two

10'6" x 6'1" (3.22 x 1.87)

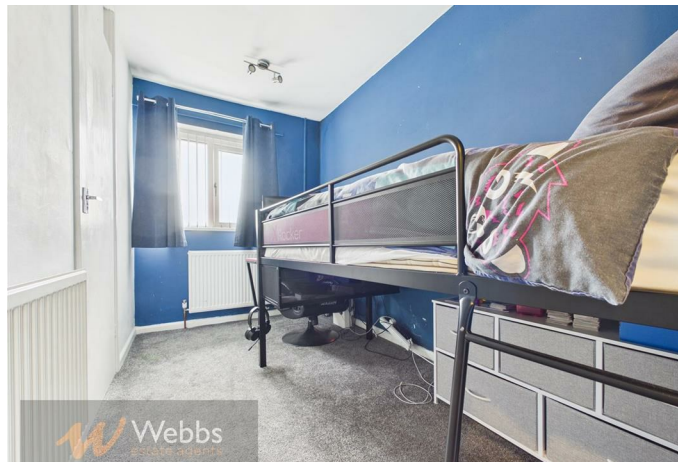
Bedroom Three

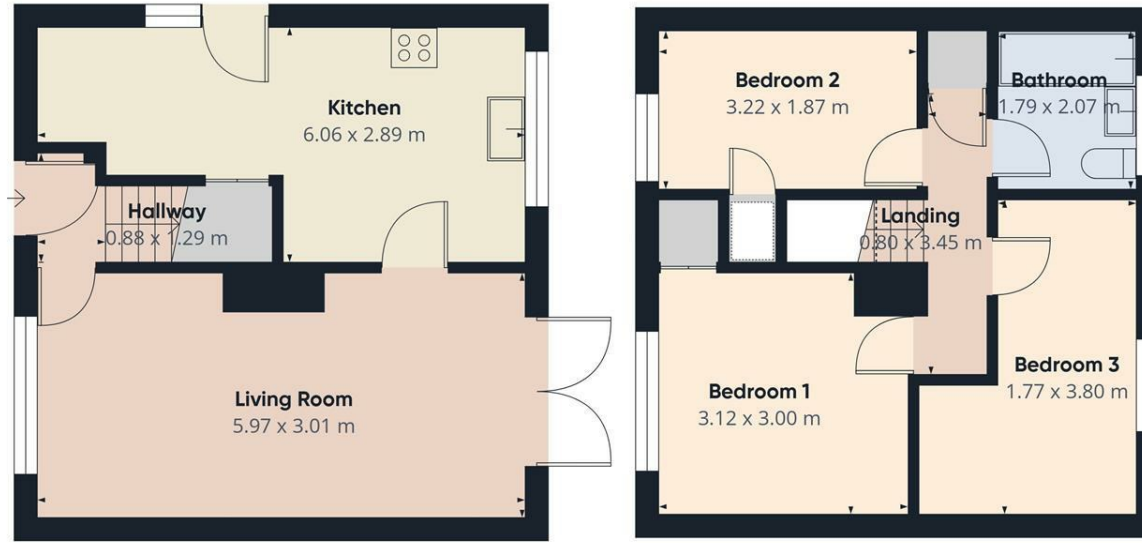
5'9" x 12'5" (1.77 x 3.80)

Bathroom

IDENTIFICATION CHECKS - C







Approximate total area⁽¹⁾
66.9 m²

(1) Excluding balconies and terraces

Reduced headroom
----- Below 1.5 m

Calculations reference the RICS IPMS 3C standard. Measurements are approximate and not to scale. This floor plan is intended for illustration only.

GIRAFFE360



Ground Floor

Floor 1

Webbs Estate Agents - endeavour to maintain accurate depictions of properties in Virtual Tours, Floor Plans and descriptions, however, these are intended only as a guide and purchasers must satisfy themselves by personal inspection.

Energy Efficiency Rating		Environmental Impact (CO ₂) Rating	
Score	Band	Score	Band
105-120	A	10-15	A
85-105	B	16-20	B
65-85	C	21-25	C
45-65	D	26-30	D
25-45	E	31-35	E
5-25	F	36-40	F
1-5	G	41-45	G

England & Wales EU Directive 2002/91/EC